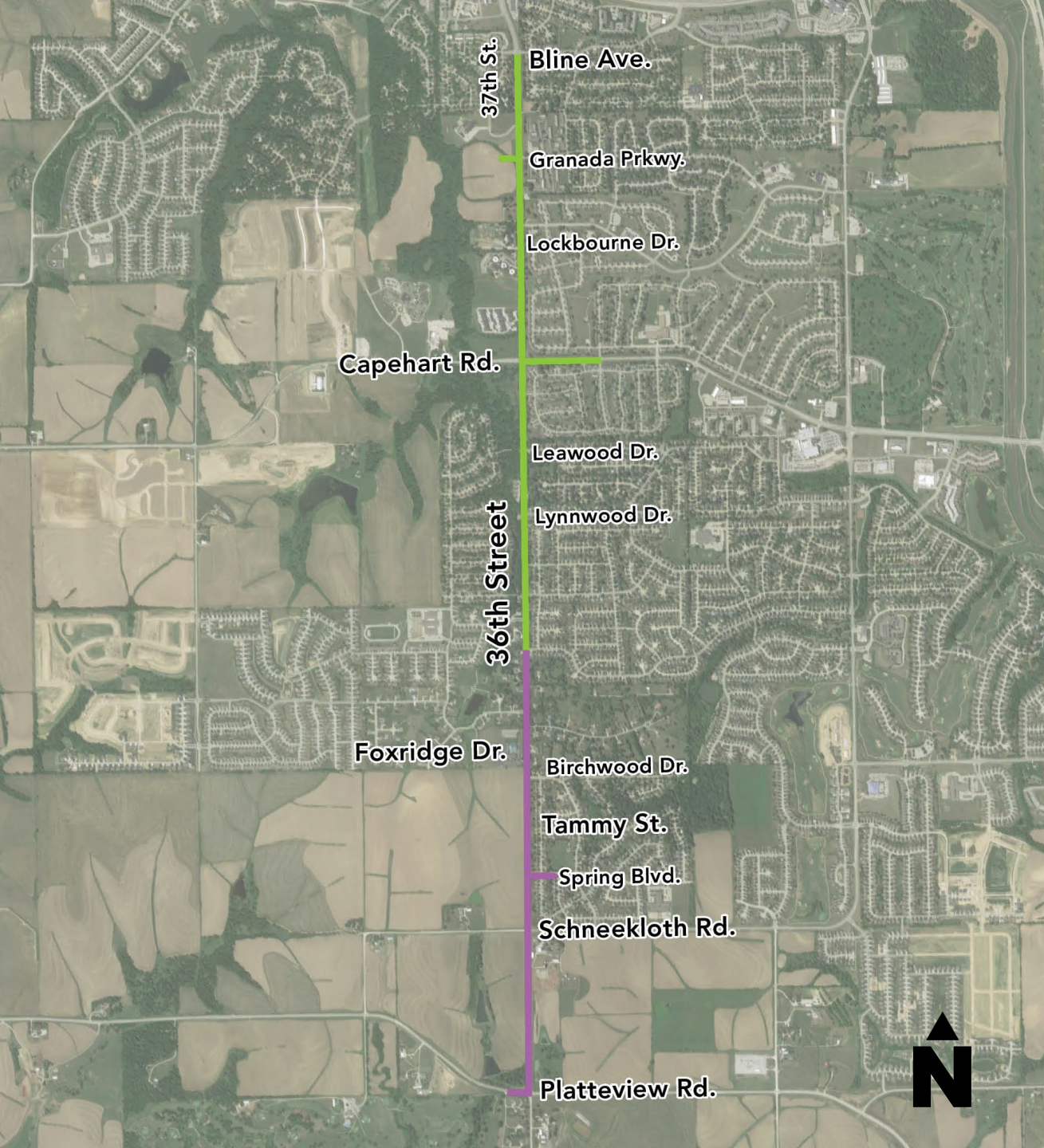


PROJECT OVERVIEW

Phase 1
Blaine Avenue to
Sheridan Road

Phase 2
Sheridan Road to
Platteview Road



WINTER 2022 – SPRING 2022




36TH STREET CONSTRUCTION - Capehart Rd. to Blackhawk Dr.

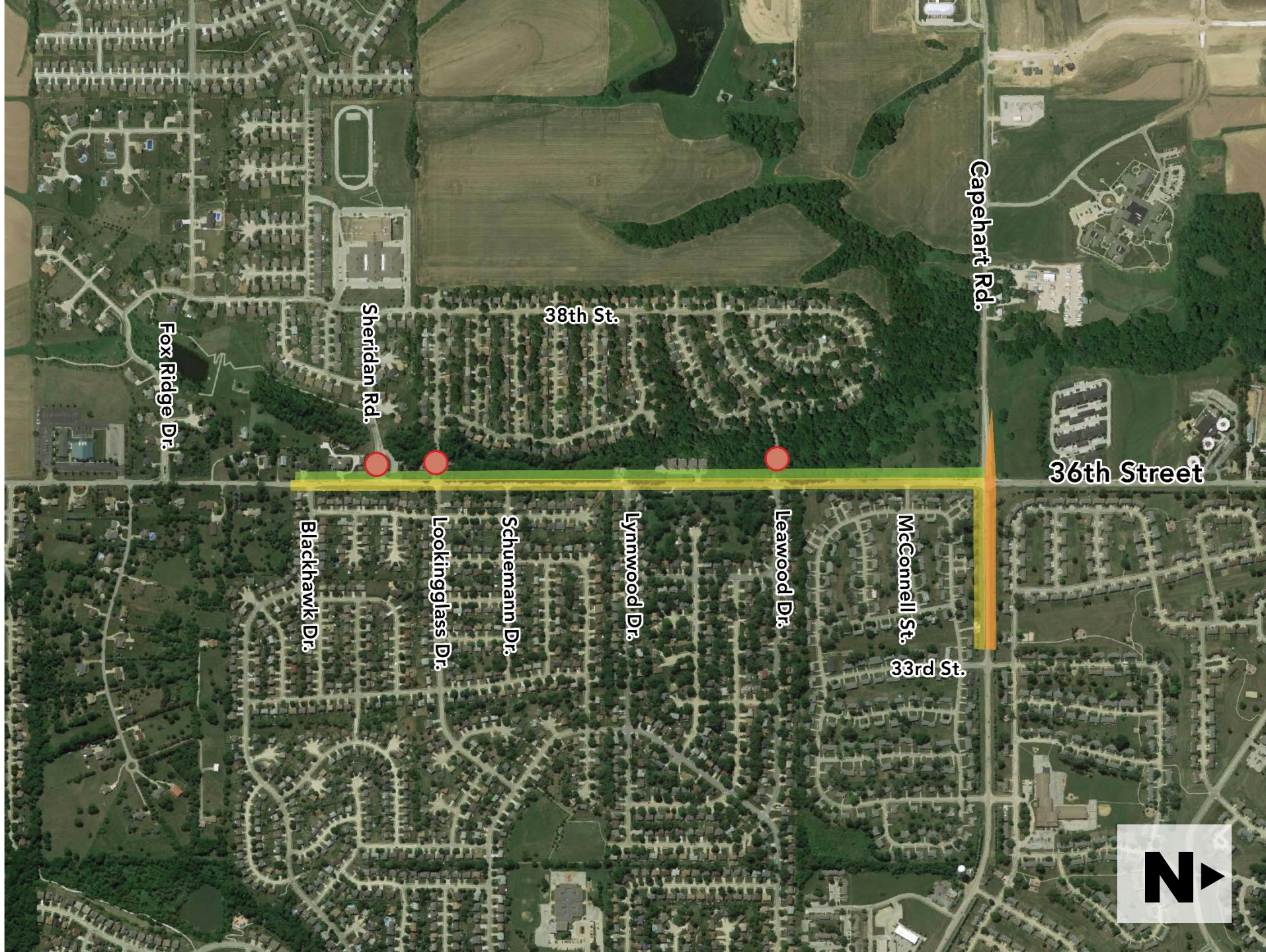
Work to include southbound lanes on 36th Street and new intersection improvements on side roads.

Will require traffic shifts and some side street closures.

Sheridan, Lookingglass West, Leawood West closed.

LEGEND

-  STREET CLOSURE
-  TRAFFIC ON NEW NORTH-BOUND PAVEMENT
-  NEW SOUTHBOUND PAVEMENT
-  TEMPORARY PAVEMENT





WINTER 2022

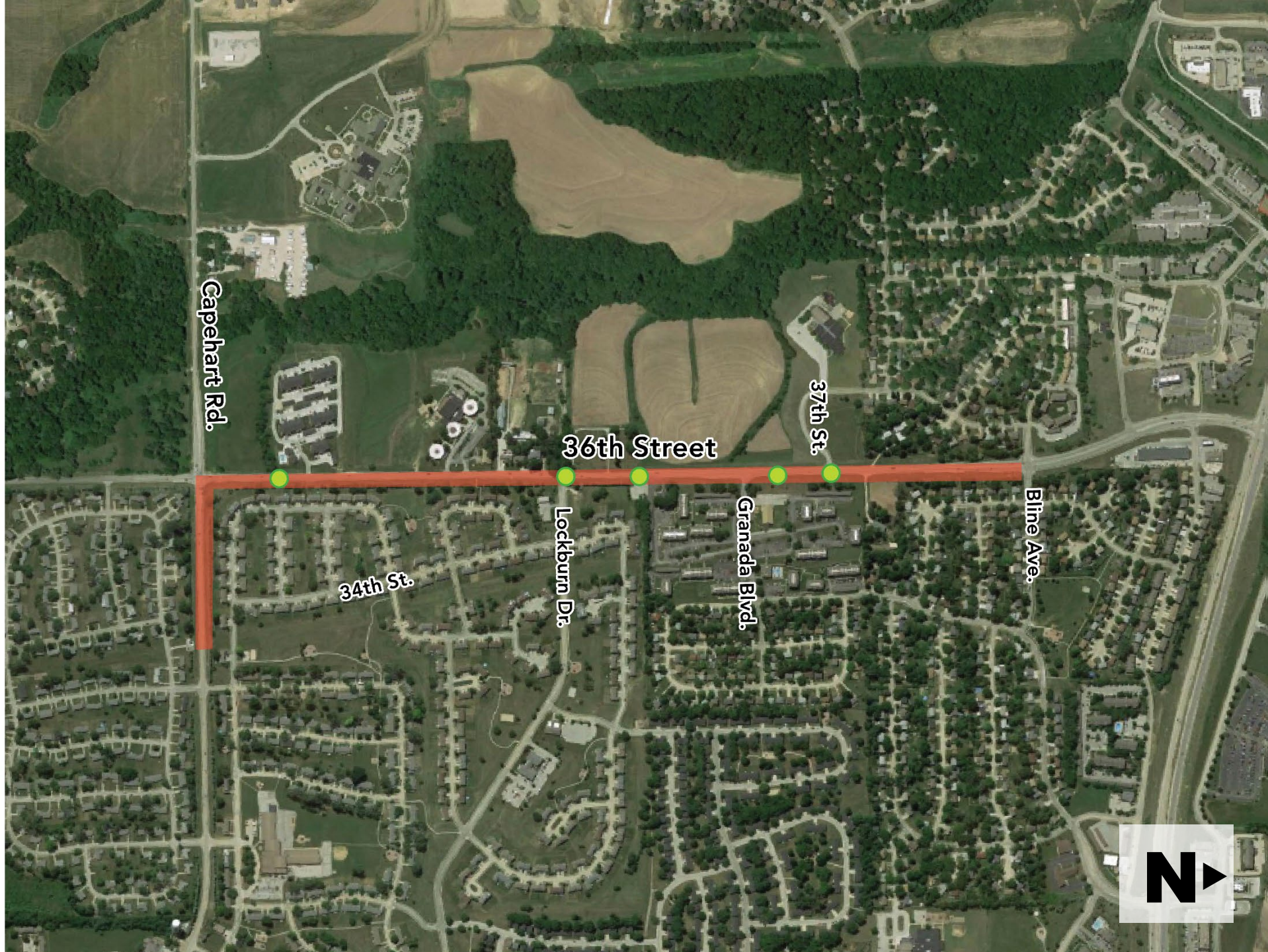
36TH STREET CONSTRUCTION - Bline Ave. to Capehart Rd.

Work to include drainage structure crossings, general clearing and grubbing, and utility relocations.

Will require traffic shifts and some side street closures.

LEGEND

-  DRAINAGE CROSSING
-  CLEARING AND GRUBBING



SPRING 2022

SUMMER 2022

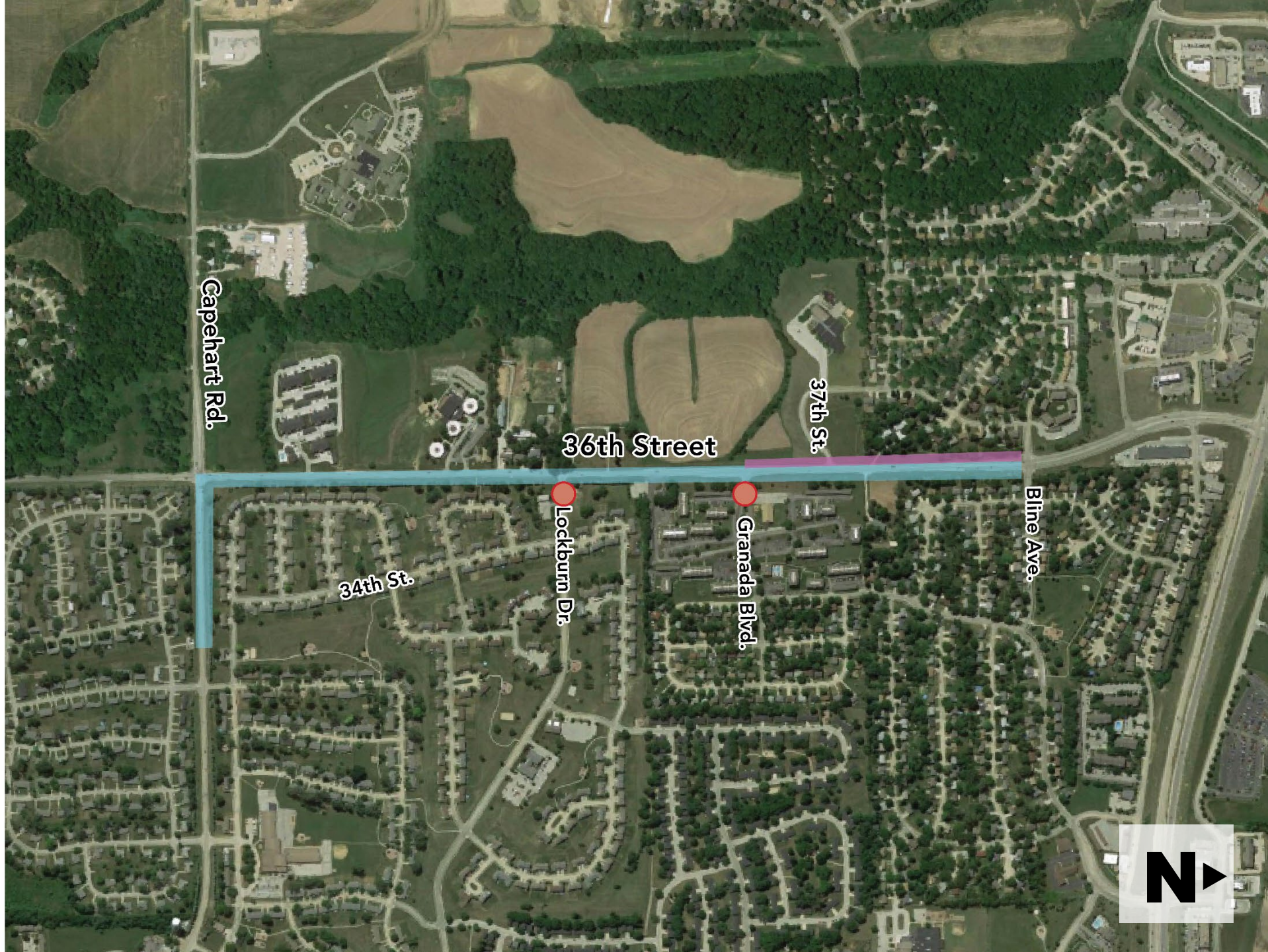
36TH STREET CONSTRUCTION - Blaine Ave. to Capehart Rd.

Work to include temporary pavement, new northbound lanes on 36th and westbound lanes on Capehart Rd.

Will require traffic shifts and some partial side street closures. Lockbourne Drive and Granada Parkway partially closed.

LEGEND

-  STREET CLOSURE
-  NEW NORTHBOUND PAVEMENT
-  TRAFFIC ON TEMPORARY PAVEMENT



SUMMER 2022

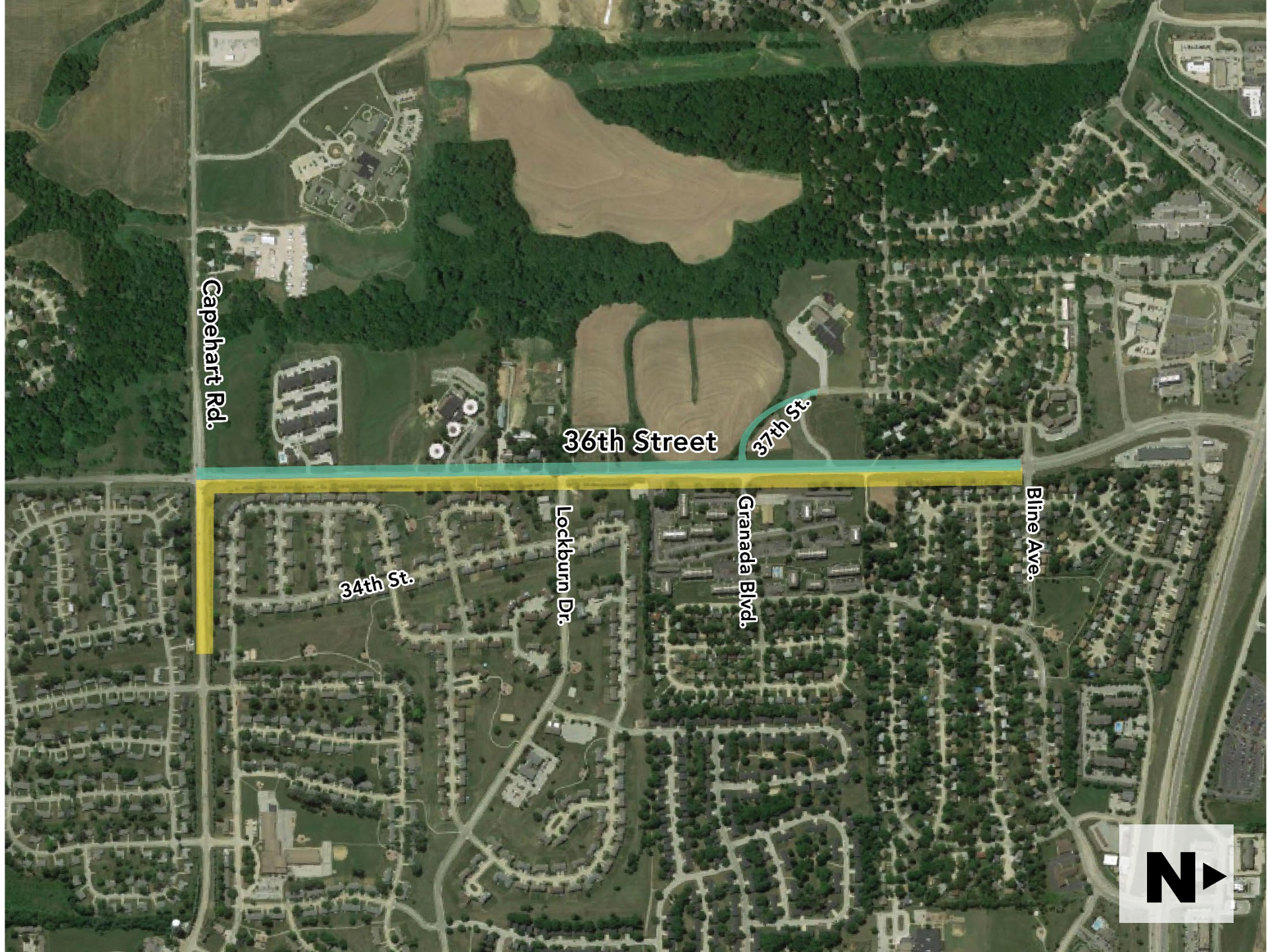
36TH STREET CONSTRUCTION - Bline Ave. to Capehart Rd.

Work to include new southbound lanes and driveways on 36th Street.

Will require traffic shifts and some driveway closures.

LEGEND

-  TRAFFIC ON NEW NORTH-BOUND PAVEMENT
-  NEW SOUTHBOUND PAVEMENT



FALL 2022

36TH STREET CONSTRUCTION - Blaine Ave. to Capehart Rd.

Work to include construction of 36th Street median and curb and gutter. Remove any remaining temporary pavement.

Will require traffic shifts until complete, then open all lanes to traffic.

LEGEND

 NEW MEDIAN AND CURB AND GUTTER

 TRAFFIC ON NEW OUTSIDE LANES

